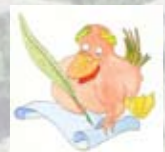


# The Mile High Club

## An Exercise in Comparative Scales



The Earth Viewed From  
One Mile Above Ground







The photographs of Earth

transmitted back during the Apollo Moon landing  
in July 1969 have completely changed our perception of our planet.

The images of distant worlds gathered through our telescopes since Galileo's time  
have revealed the austere grandeur of the solar system.

None of these previous images prepared us for the startling sight of our own planet.

The shimmering surface and transient clouds cloaking continents that were familiar previously  
on maps are set against an intensely black void.

Dwelling on the surface of the planet we are more aware of boundaries and insurmountable barriers  
which inhibit our travel or thwart our improving plans.

But seen from space the image of Earth is of a splendid Eden swirling with ephemeral glories.

\* \* \*

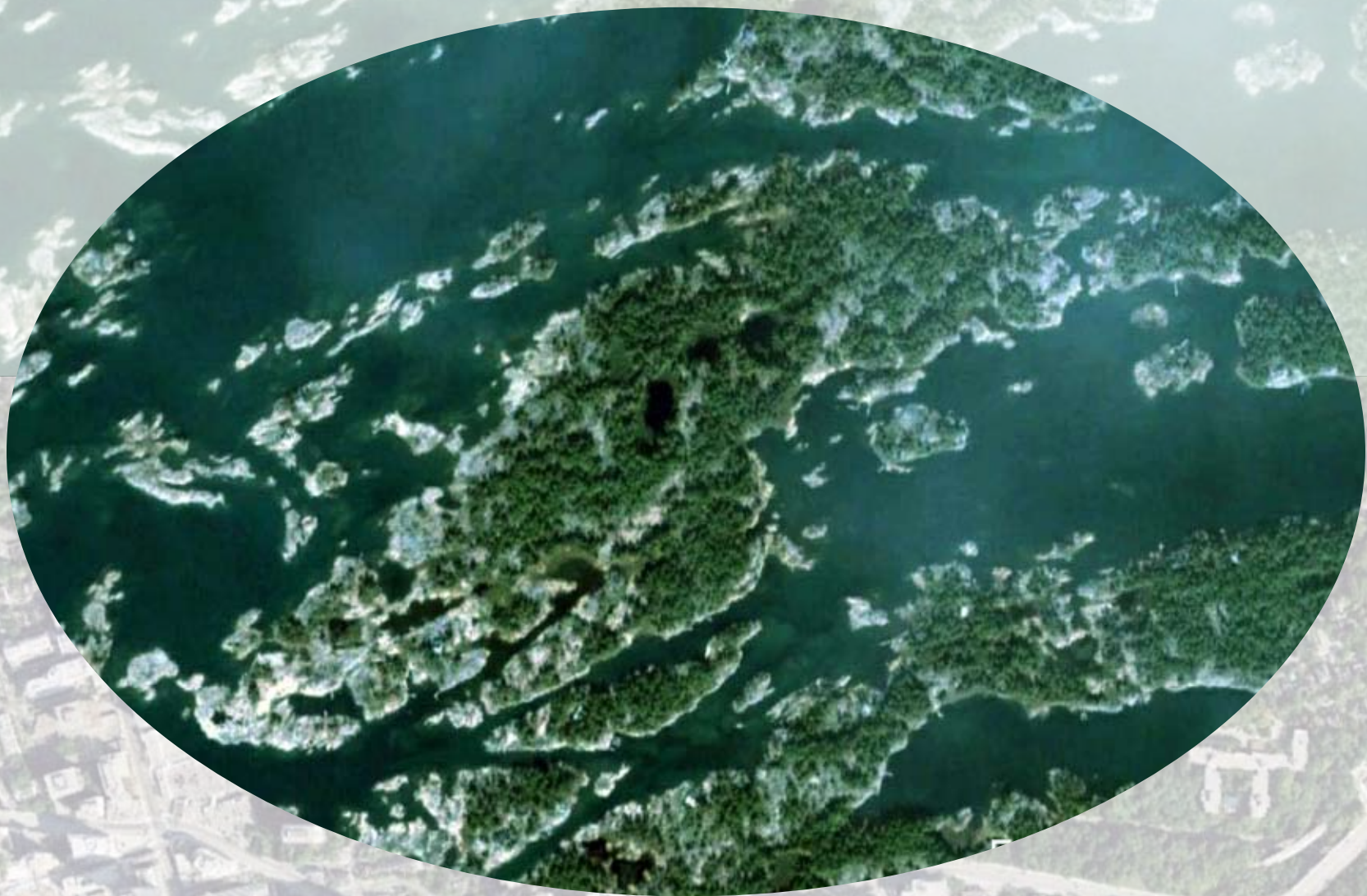
This compilation of satellite and aerial photographs gives a bird's eye view of landscapes from a vantage point  
exactly one mile above the Earth's surface.

Familiar landscapes are juxtaposed with landscapes of history or of myth, all at the same scale.

*Flaubert Duck Press - Summer 2010*







Fairwood Island  
Pointe au Baril





Bosco Manor - 1628  
Shaw-Wood's Home in Bermuda





The Acropolis  
Athens





Almaty  
Kazakhstan





Ayers Rock  
Australia





Baghdad  
Iraq





Baku  
Azerbaijan





The Imperial Palace  
Bangkok, Thailand





Beijing  
The Forbidden City





Bosco Manor - 1628  
Shaw-Wood's Home in Bermuda





Borobudur  
Indonesia





City of the Dead  
Cairo, Egypt





Fairlie Wharf  
Calcutta





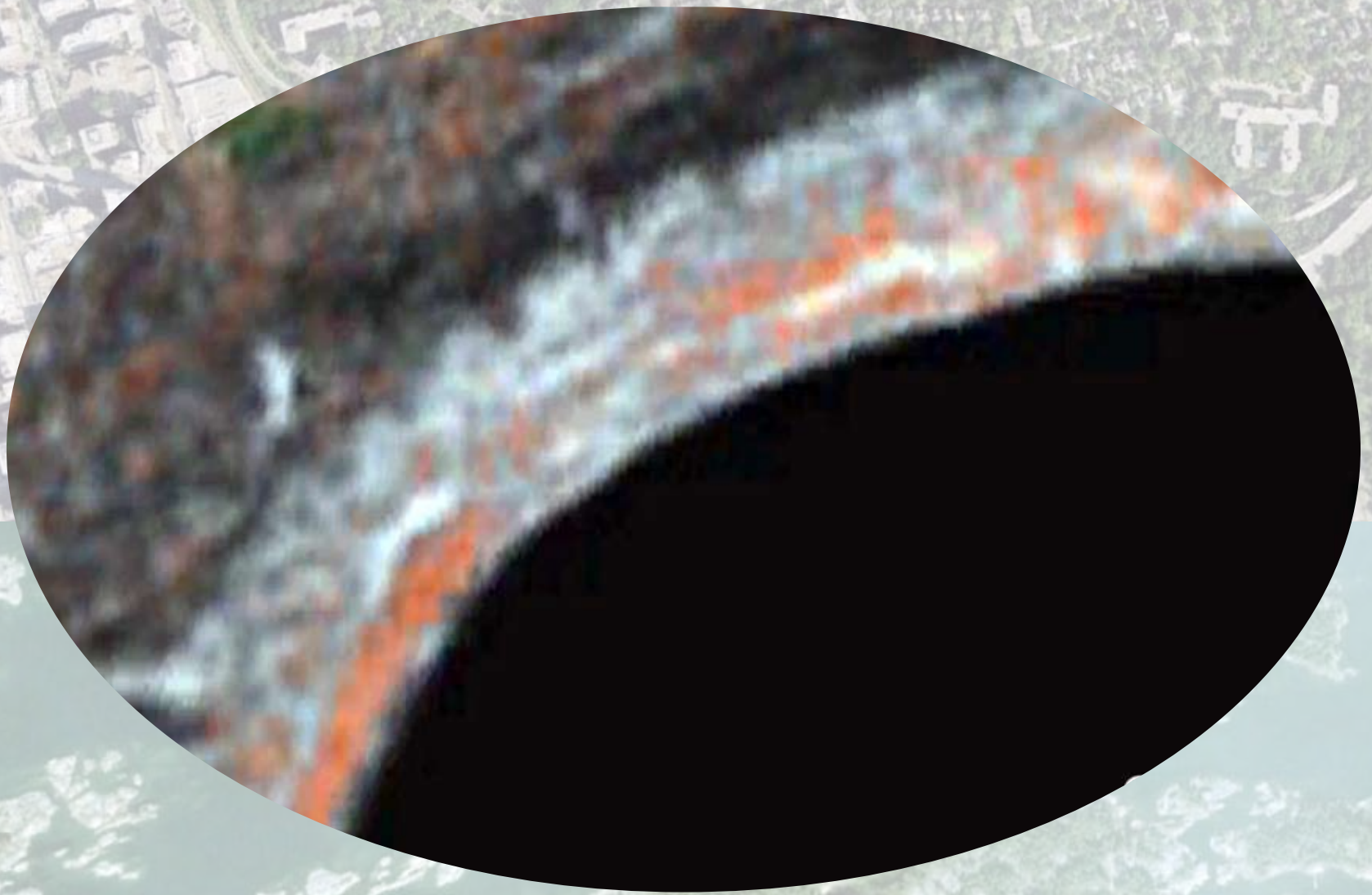
Cambridge  
United Kingdom





Chichen Itza  
Yucatan, Mexico





Chubb Crater  
Quebec





Covent Garden  
London





Ctesiphon  
Iraq